



Poets Place, Alderton Hill, Loughton

Asking Price: £420,000
Leasehold

Poets Place, Alderton Hill, Loughton

Set within the McCarthy and Stone development known as Poets Place, and extremely popular for retirement living is this ground floor apartment, with the benefit of a balcony and allocated parking space. The apartment offers one bedroom, sitting/dining room, kitchen, utility room and a wet room, together with an en-suite dressing room to the bedroom. To the outside there are neatly tended communal gardens and the already mentioned parking space.

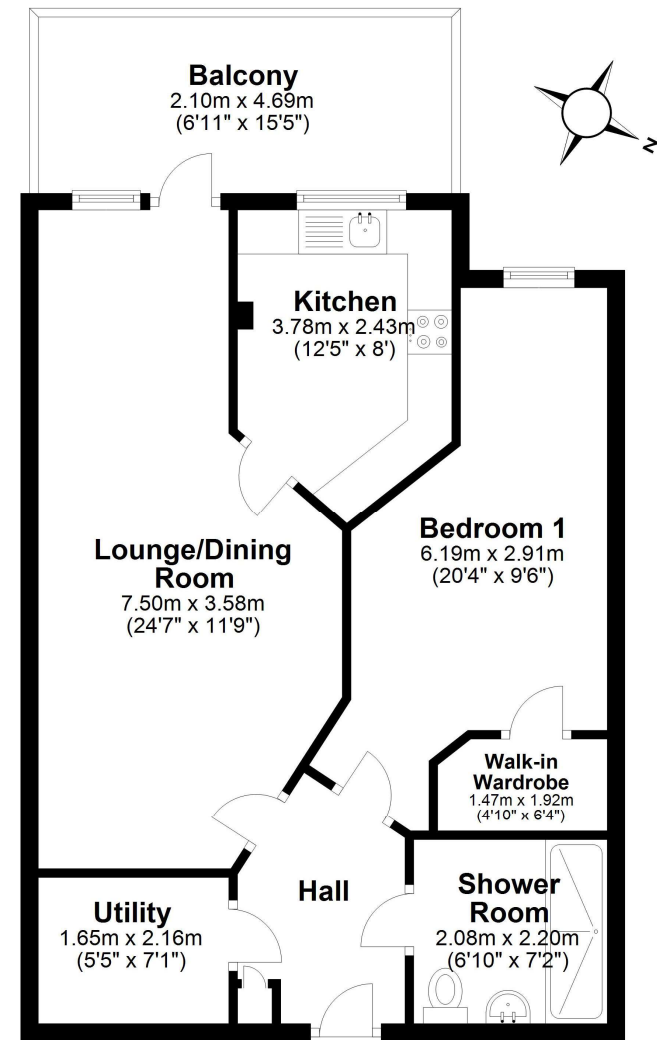
Designed specifically for independent retirement living for the over 60's. The apartments boast underfloor heating throughout, Sky/Sky+ connection points in living rooms, and secure camera entry system with use with a standard TV. The dedicated House Manager is on site Monday to Friday - 9.00am - 3.00pm Monday – Friday to take care of the running of the development. There's no need to worry about the burden of maintenance costs as the service charge covers the cost of all external maintenance, gardening and landscaping, external window cleaning, buildings insurance, water rates and security systems. All energy costs of the resident's lounge, and other communal areas are also covered in the service charge. For peace of mind, the development has camera door entry and 24-hour emergency call systems, should assistance be required. The community lounge provides a great space to socialise with other residents of Poets Place, together with friends and family when visiting. The property is being offered for sale with no onward chain and is conveniently placed for access to Loughton underground station, being 0.2 miles and the High Road with a selection of shops, restaurants, a M&S food hall, a Morrisons and Sainsbury's supermarket is within 0.3 miles.

Accommodation & Amenities

- EPC: B
- Sitting/Dining Room
- Kitchen
- Bedroom with En-Suite Dressing Room
- Utility Room and Shower Room
- Balcony
- Allocated Parking Space and Communal Gardens
- Residents Day Room
- Lift Service

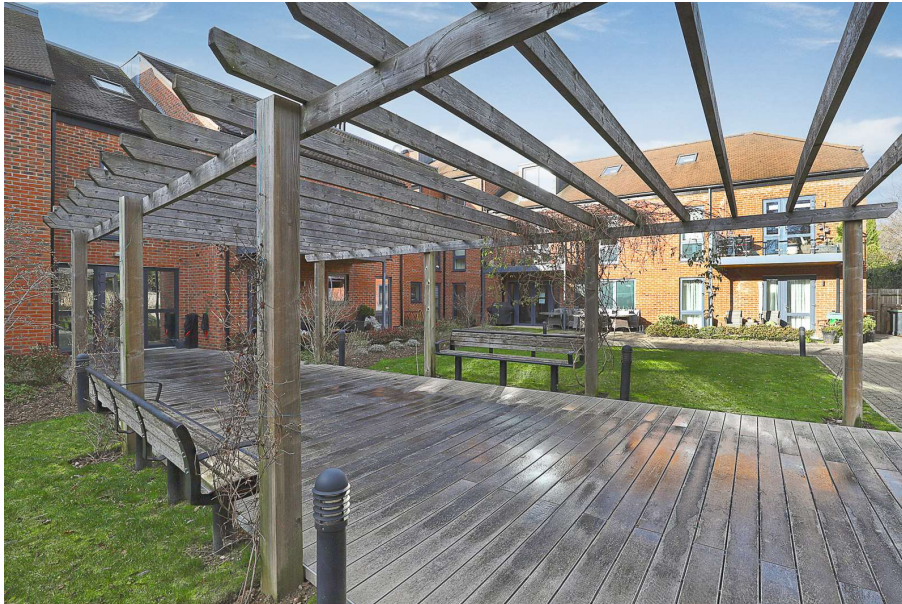
LAWLORS
— SALES LETTINGS ELITE —

Ground Floor
Approx. 58.1 sq. metres (625.8 sq. feet)



Total area: approx. 58.1 sq. metres (625.8 sq. feet)





We may refer you to recommended providers of ancillary services such as Conveyancing, Financial Services, Insurance and Surveying. We may receive a commission payment fee or other benefit (known as a referral fee) for recommending their services. You are not under any obligation to use the services of the recommended provider. The ancillary service provider may be an associated company of Lawlors.