

LAWLOR^S

— SALES LETTINGS ELITE —

www.lawlors.co.uk



Princes Way, Buckhurst Hill, Essex

Asking Price: £895,000

Freehold

Princes Way, Buckhurst Hill, Essex

Enviably situated within this no through road and backing onto Knighton Wood, being a remnant of ancient Epping Forest, lies this beautifully presented and extended semi-detached residence, that offers surprisingly spacious accommodation, that warrants and internal viewing to be fully appreciated.

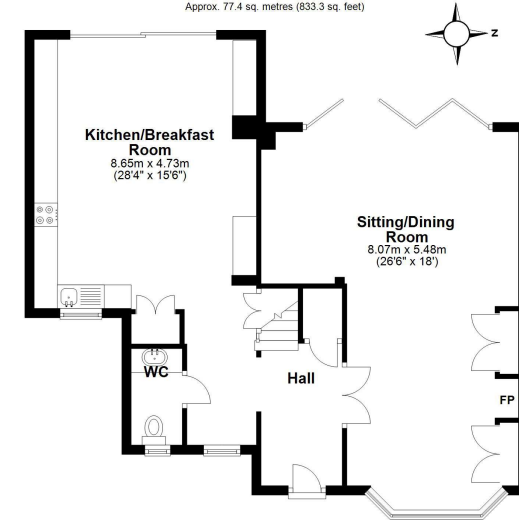
The ground floor incorporates a sitting/dining room with a focal point being a fireplace, whilst bi-fold doors open onto the patio garden. The kitchen/breakfast room compliments the sitting/dining room being of a considerable size and has an extensive range of units, and again has direct access to the garden. The three bedrooms are all doubles with bedroom one being extremely spacious and featuring an en-suite shower room and dressing room. Bedroom two there is an en-suite bathroom and bedroom three has an en-suite cloakroom.

The property is conveniently placed for the Central Line station being within 0.5 miles walking distance making central London very accessible. Plus, a selection of restaurants and boutique style shops, and a Waitrose can be found within Queens Road being a 0.4 mile walk from the property.

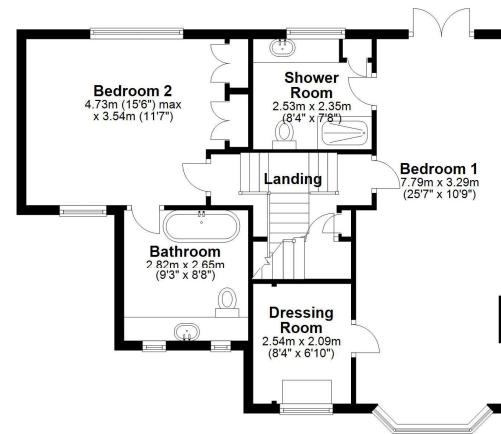
Buckhurst Hill is also renowned for its education provided by a selection of schools, such as Braeside, St Johns C of E primary school, Daiglen school, Braeside primary school, and Buckhurst Hill primary school, which are all within 1.0 miles walk of the property. A David Lloyd centre is within 2.2 miles and more shopping facilities are located at Loughton, being within 1.9 miles with a choice of two supermarkets, a M&S food hall, together with a selection of restaurants/bars and is also on the borders of Epping Forest.

LAWLORS
— SALES LETTINGS ESTATE —

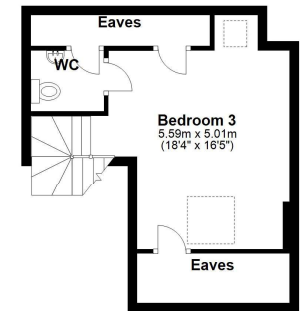
Ground Floor
Approx. 77.4 sq. metres (833.3 sq. feet)



First Floor
Approx. 68.1 sq. metres (733.2 sq. feet)



Second Floor
Main area: approx. 23.1 sq. metres (248.2 sq. feet)
Plus eaves, approx. 5.9 sq. metres (63.0 sq. feet)



Garden is approx 17m x 11m

Main area: Approx. 168.6 sq. metres (1814.6 sq. feet)
Plus eaves, approx. 5.9 sq. metres (63.0 sq. feet)





We may refer you to recommended providers of ancillary services such as Conveyancing, Financial Services, Insurance and Surveying. We may receive a commission payment fee or other benefit (known as a referral fee) for recommending their services. You are not under any obligation to use the services of the recommended provider. The ancillary service provider may be an associated company of Lawlors.