



Hazelwood, Loughton, Essex

Offers Over: £1,100,000
Freehold

Hazelwood, Loughton, Essex

LAWLORS
— SALES LETTINGS ELITE —

Lawlors are delighted to offer for sale this beautifully presented, four-bedroom, link detached home.

The accommodation is split over two levels and is immaculately presented throughout. The bright and spacious ground floor comprises: entrance hall, cloakroom, living room, ground floor bedroom, dining room, separate utility room, a well-appointed kitchen and conservatory which leads out onto the private garden and pool area. The first floor comprises two large double bedrooms, a single bedroom and both an en-suite and a family bathroom.

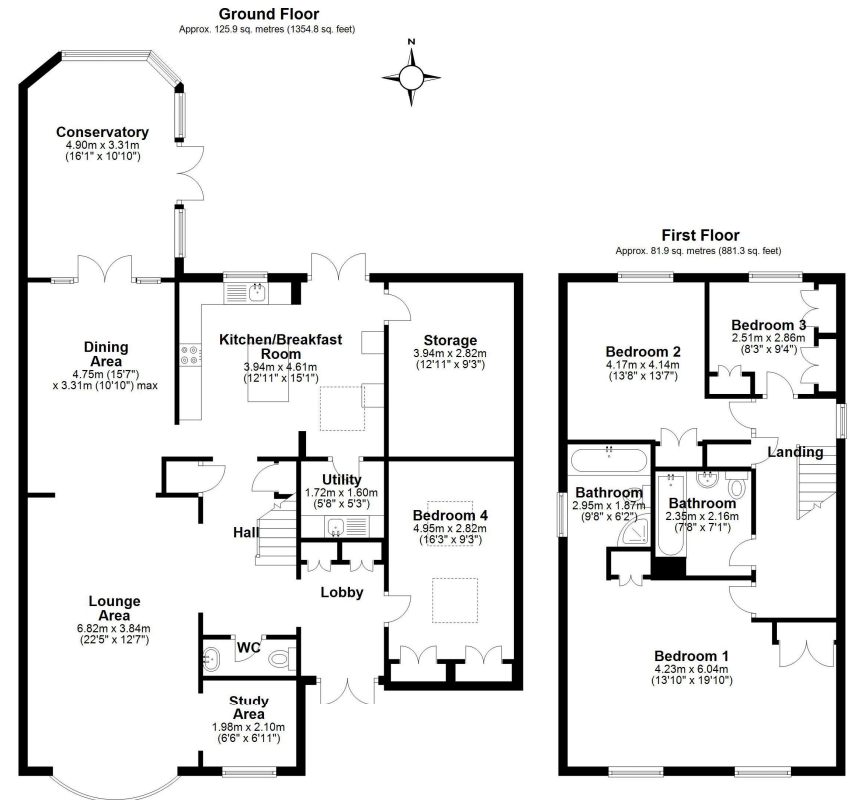
This property further benefits from a secure garage and a private rear garden that is home to a delightful, heated swimming pool. The rear garden is a very tranquil and private space, reminiscent of a hidden oasis.

Hazelwood is a very well regarded and sought after residential cul-de-sac in the heart of Loughton. Loughton is known for its scenic views and proximity to Epping Forest. It has excellent transport links into central London with Loughton underground station just a short walk away.

The property is available immediately and offered for sale with no onward chain.

Accommodation & Amenities

- EPC: D
- Four Bedrooms
- Immaculately Presented
- Off Street Parking and Garage
- Swimming Pool
- No Onward Chain
- Sought-After Cul-De-Sac



Garden is approx 11m x 16m

Total area: approx. 207.7 sq. metres (2236.1 sq. feet)





We may refer you to recommended providers of ancillary services such as Conveyancing, Financial Services, Insurance and Surveying. We may receive a commission payment fee or other benefit (known as a referral fee) for recommending their services. You are not under any obligation to use the services of the recommended provider. The ancillary service provider may be an associated company of Lawlors.