

LAWLOR^S

— SALES LETTINGS ELITE —

www.lawlors.co.uk



The Manor, Regents Drive, Woodford Green

Asking Price: £760,000
Share of Freehold

The Manor, Regents Drive, Woodford Green

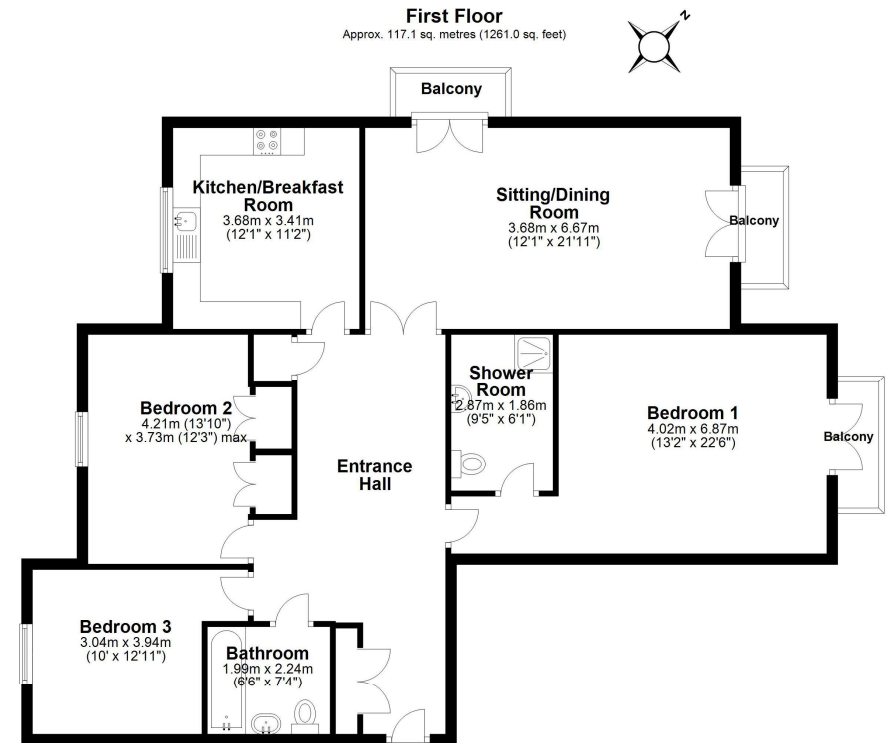
Situated within the exclusive development of Repton Park, is this first floor apartment set within a modern and imposing residence which is located discreetly behind a gated entrance providing privacy and security. Upon entering the apartment, you are greeted by a spacious entrance hall that could be made a feature of. The living accommodation features three double bedrooms with the main bedroom benefitting from an en-suite shower room and a balcony overlooking splendid communal gardens. The generously proportioned sitting/dining room also features a balcony to the side and rear, again overlooking the gardens. Then there's the kitchen/breakfast room and family bathroom. The apartment is accessed via communal entrance with a staircase and lift service to all floors. To the outside are splendid communal gardens which are private to the development and there is underground parking for two cars.

Repton Park is a much sought-after development set in acres of communal gardens and landscaped grounds. Other benefits of this luxury community include CCTV, 24-hour concierge, night-time security guards patrolling the grounds and an exclusive Virgin Active Spa and Gym. Furthermore, this prestigious development is within reach of a choice of Central Line stations that provide access to Central London being Chigwell 1.4 miles and Woodford 1.6 miles respectively, as well as local shops being located at Woodford Bridge being within 0.8 miles.

Accommodation & Amenities

- EPC: C
- Three Double Bedrooms
- En-Suite to Bedroom One
- Sitting/Dining Room
- Kitchen/Breakfast Room
- Family Bathroom
- Three Balconies
- Underground Parking for Two Cars
- Lift Service
- Splendid Communal Gardens
- Exclusive Development

LAWLORS
— SALES LETTINGS ELITE —



Total area: approx. 117.1 sq. metres (1261.0 sq. feet)





We may refer you to recommended providers of ancillary services such as Conveyancing, Financial Services, Insurance and Surveying. We may receive a commission payment fee or other benefit (known as a referral fee) for recommending their services. You are not under any obligation to use the services of the recommended provider. The ancillary service provider may be an associated company of Lawlors.