

LAWLOR^S

— SALES LETTINGS ELITE —

www.lawlors.co.uk



Carlton House, Algernon Road, Loughton, Essex

Asking Price: £355,000
Leasehold

Carlton House, Algers Road, Loughton, Essex

Recently refurbished and now providing a fresh and modern atmosphere is this ground floor two bedroom retirement apartment, situated within a popular development known as Carlton House. The remainder of the accommodation comprises of a lounge/dining area, with archway to the kitchen and a bathroom.

Externally the property benefits from residential parking and beautifully kept landscaped grounds. Designed specifically for independent retirement living for the over 50's, the development has open communal/social areas, ideal for socialising with other residents of Carlton House, and for when family and friends visit. Other benefits include on-site warden assistance, security entry phone system, lifts to all floors, hairdressers, games room, a library and shared laundry facilities.

Situated on the south side of Loughton, and in what is considered to be a quiet road, the property is within 0.3 of a mile (walking) of Loughton central line station making access into London convenient. The High Road with its shops, cafes and restaurants together with a M&S food hall, a Morrisons and Sainsbury's supermarket is again within 0.3 miles of the property.

EPC: C

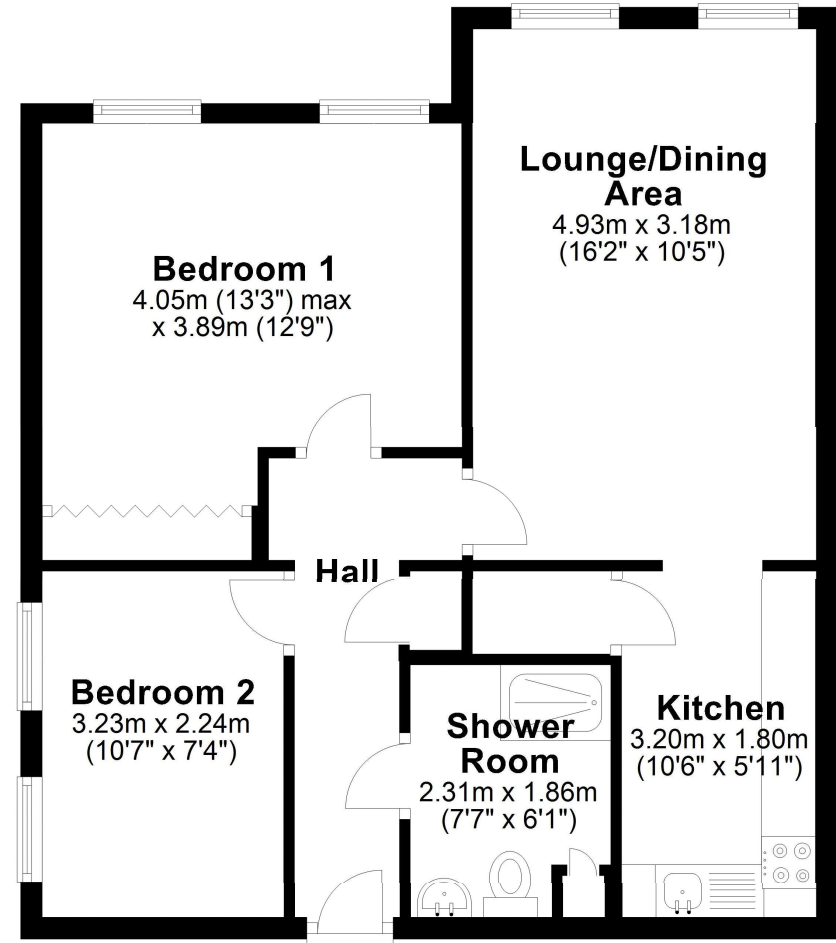
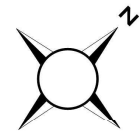
Accommodation & Amenities

- Lounge/Dining Area
- Kitchen
- Two Bedrooms
- Shower Room
- Communal Gardens
- Residents Parking
- CHAIN FREE

LAWLORS
— SALES LETTINGS ELITE —

Ground Floor

Approx. 52.5 sq. metres (565.2 sq. feet)



Total area: approx. 52.5 sq. metres (565.2 sq. feet)





We may refer you to recommended providers of ancillary services such as Conveyancing, Financial Services, Insurance and Surveying. We may receive a commission payment fee or other benefit (known as a referral fee) for recommending their services. You are not under any obligation to use the services of the recommended provider. The ancillary service provider may be an associated company of Lawlors.